

Appendix IV. Free surface for Static Drift Condition: STAR-CCM+ (FORCE)

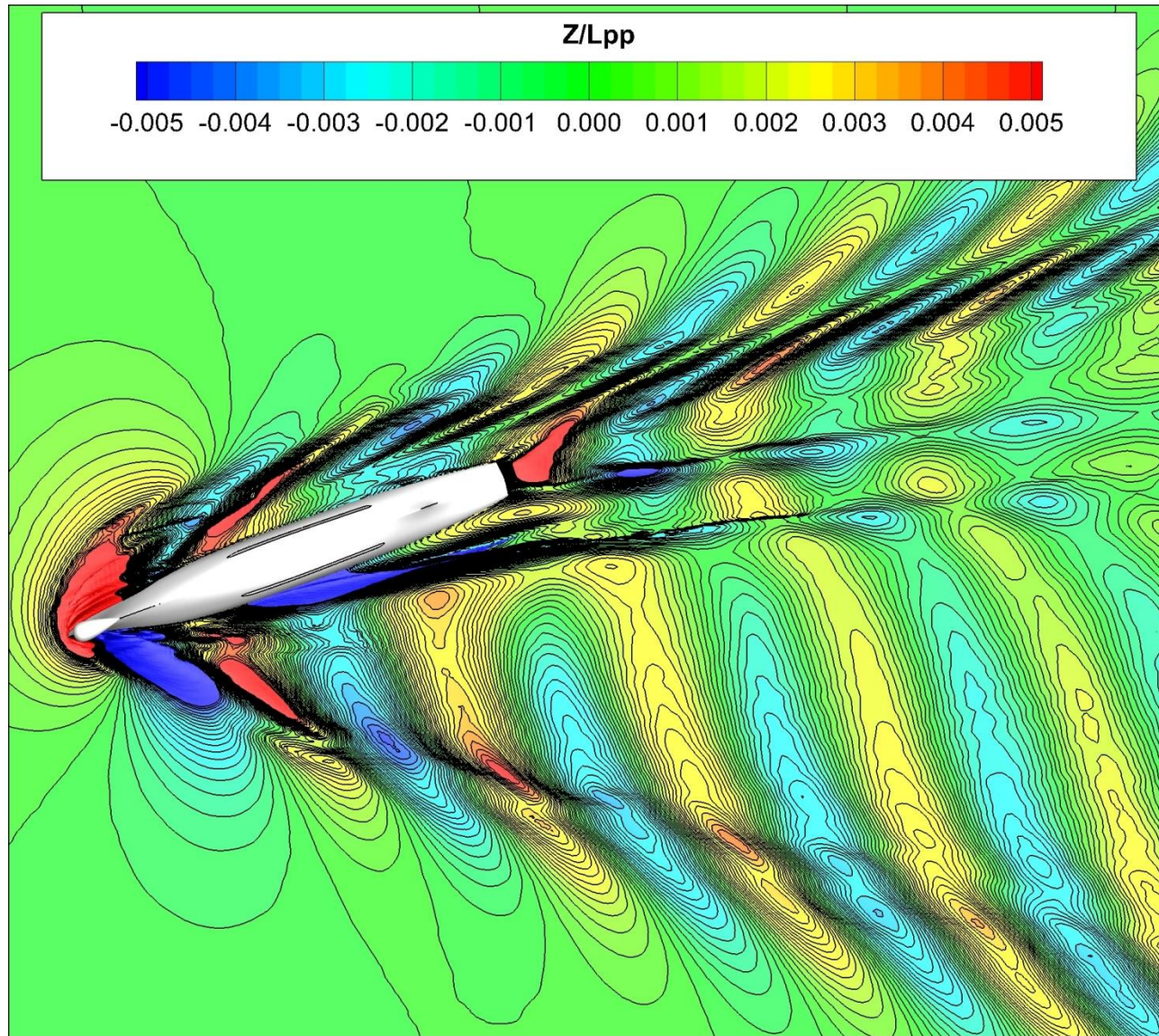


Figure V.1-1: Top view of free-surface elevation contour. Contour levels are from -0.005 to 0.005 with intervals of 2.5×10^{-4} .

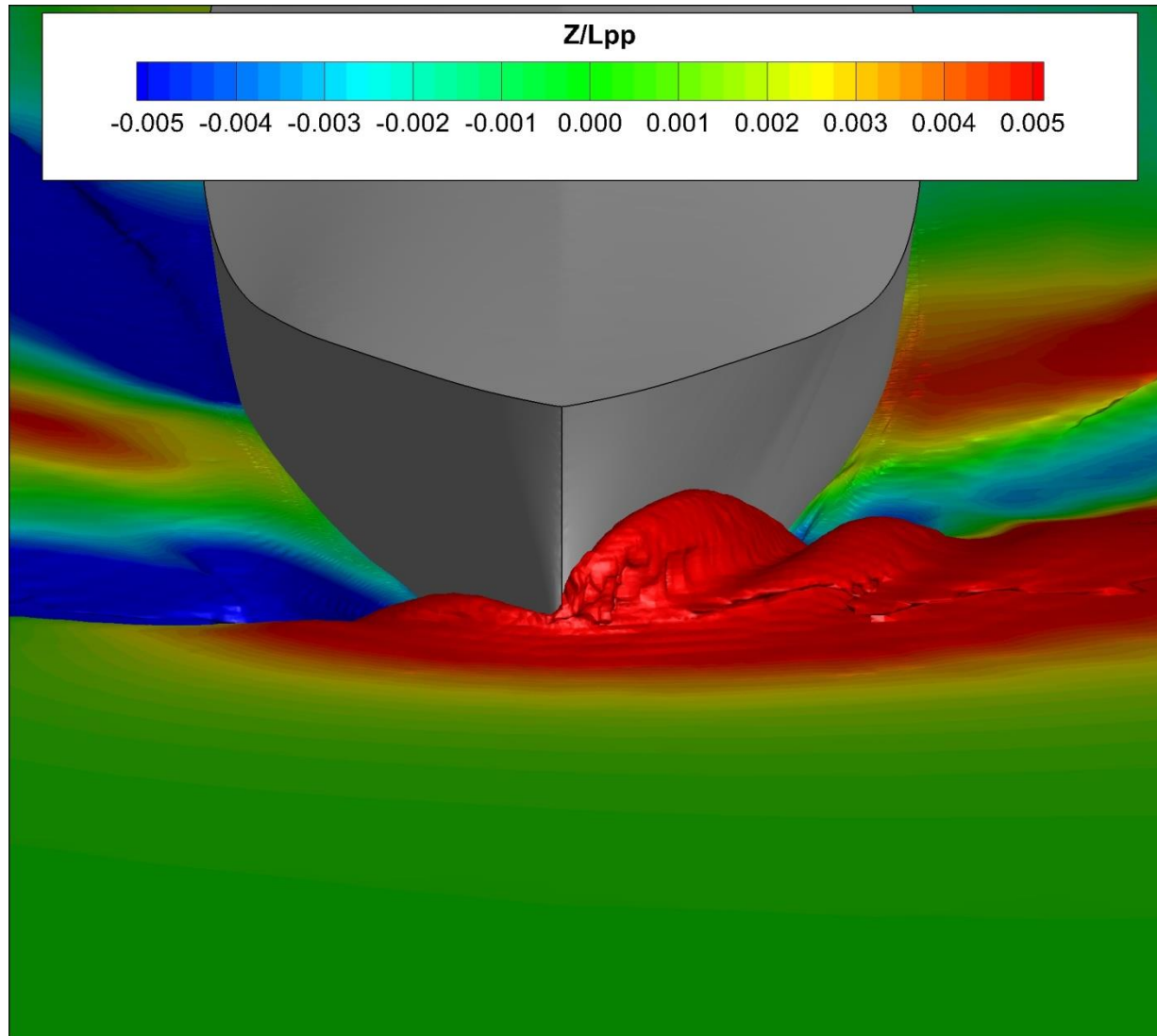


Figure V.1-2: Free-surface elevation. Bow wave on windward side. Contour levels are from -0.005 to 0.005 with intervals of 2.5×10^{-4} .

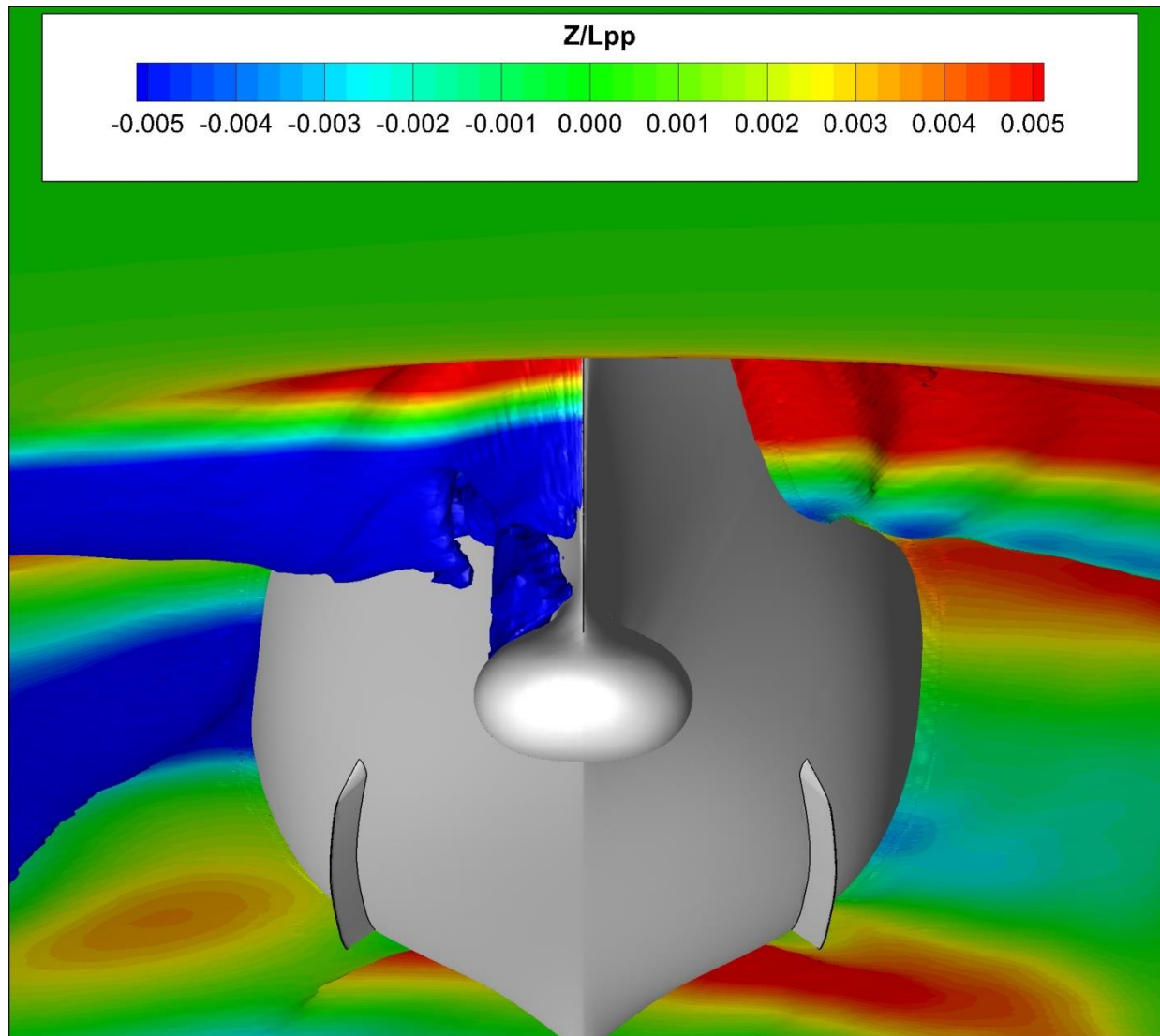


Figure V.1-3: Free-surface elevation. Bow wave through on leeward side.. Contour levels are from -0.005 to 0.005 with intervals of 2.5×10^{-4} .

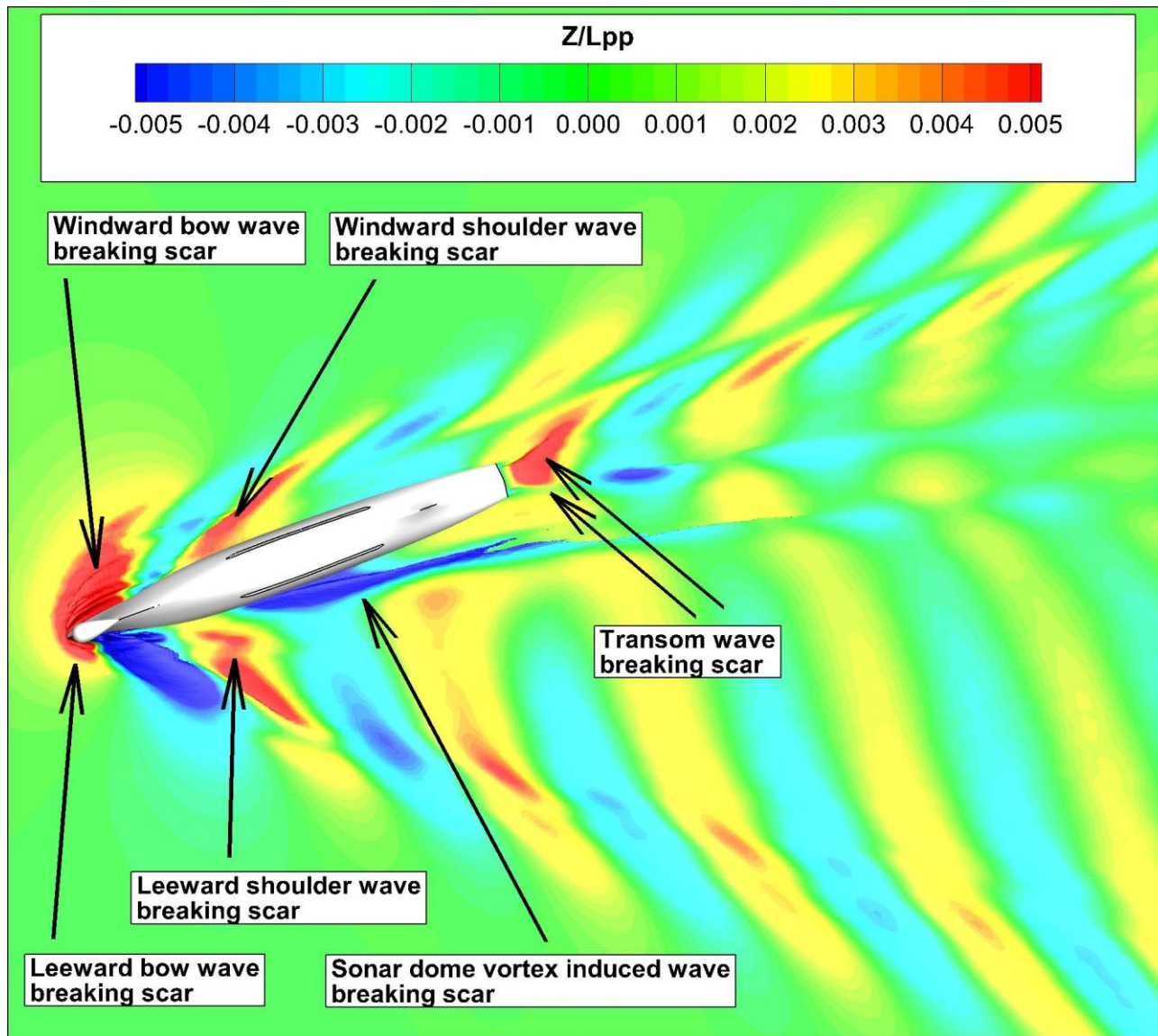


Figure V.1-4: Free-surface elevation. Bow wave through on leeward side.. Contour levels are from -0.005 to 0.005 with intervals of 2.5×10^{-4} .